

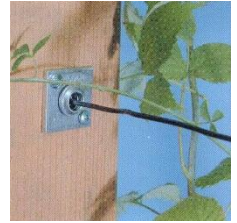
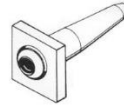


VINEYARD AND ORCHARD SUPPLIES 2016 PRICE LIST

QUICK-END

This trellis and fence wire anchor securely holds wire to end posts. Insert the wire into and through the Quick-End. It automatically locks onto the wire. To tighten, just pull more wire through the Quick-End.

- 8 – 9 gauge and 4mm Agri-Line
- 10 – 11 gauge
- 12 – 13 gauge and 3mm Agri-Line
- 13 – 16 gauge



QUICK-SPLICE

For easy splicing of trellis and fence wire. No tools required. Simply insert the wire into each end of the Quick-Splice and you have a splice.

- 8 – 9 gauge and 4mm Agri-Line
- 12 – 13 gauge and 3mm Agri-Line
- 13 – 16 gauge



GRIPPLE

Vine & Fruit Tree wires can be quickly anchored and tensioned using SYSTEM GRIPPLE. Re-tensioning can then be carried out year after year.

- Small** 14 – 19 gauge
- Medium** 10 – 14 gauge and 3mm Agri-Line
- Barbed** 12.5 gauge
- Large** 7.5 gauge and 4mm Agri-Line

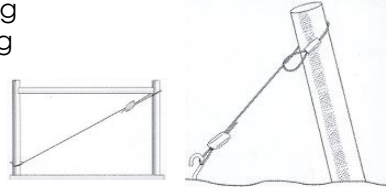


GRIPPLE PLUS BRACING/ANCHORING KITS

The Grippple Plus Anchor/Bracing Kits are the future for secure anchoring/ bracing in vineyards, fruit orchards and fencing. Whether it be End Posts in vineyards or H-Posts in fencing – the GPAK kits provide a strong, secure support for the complete trellis or fence structure. The GPAK's come complete with the Grippple plus and easy to handle galvanized steel wire rope, with a pre-ferruled loop for fast and easy installation. Available in two sizes and load ratings to suit your application.

Kits are installed and tensioned within minutes and when it comes to maintenance, they can be re-tensioned in seconds!

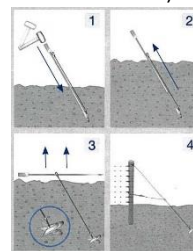
- GPAK3** 3mm X 15' Long 880 lbs – load 10/bag
- GPAK4** 4mm X 16.5' Long 1320 lbs – load 6/bag



GRIPPLE BADGER ANCHOR

The Grippple Badger Anchor creates a strong anchor point underground that is instantly loaded, and will perform in a variety of soil types.

- BA4-6FT-6mm-L** 6' Long – with 6mm Cable – w/top loop



GRIPPLE TWISTER

Great way to secure tail wires, creating an aesthetic, hazard-free finish for your trellis. It encases the wire so that no sharp points are protruding, but can easily be removed should you need to re-tension the wire in the future. UV resistant wire. Fits 3/64" – 1/8" wire.

- GRTW** 50/bag



GRIPPLE ADJUSTMENT KEY

Insert the key into the small hole adjacent to main channel, releasing the roller and allowing the Gripple to be moved freely along the wire.

GAK



TORQ GRIPPLE TENSION TOOL

Tensions Gripples that accommodate up to 1/4" diameter wire. The integral gauge measures the tension as you work, optimizing the life of the wire by achieving your ideal tension. Easy-to-use, lightweight and compact.

TGTT



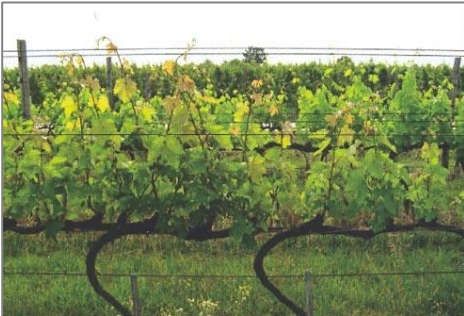
AGRI-LINE (Available in Black)

Industry Leader in applications for Vineyards, Orchards, Gardens and Greenhouse Construction.

AGRI-LINE MONOFILAMENT ADVANTAGE: Seven times lighter than steel wire, making it much easier to handle * Two to three rows can be installed simultaneously * Properly stretched and installed, it is virtually maintenance free-retaining its tension even in high summer heat and the cold of winter * Permanent smooth surface that helps prevent friction and rust damage * Not effected by pesticides, fungicides or fertilizers * Features high insulation ability against low temperatures, helping to ensure that frost damage to plants does not occur on points of contact * Load capacity is above average * Lightning proof Agri-Line is a high-tensile polyamide (PA6) monofilament with a low elongation and compact cross section that make it particularly ideal for orchards, vineyards, shade covers, netting and fencing.

3mm X 4862' (11 gauge)

4mm X 2796' (8 gauge)



info@ferrisfencing.com

FERRIS FENCING

430 Grovehill Rd
Qualicum Beach, BC
V9K 2A3

1-800-665-3307

TEL: 250-757-9677 FAX: 250-757-9670

F.O.B Qualicum, BC
(unless otherwise specified)



www.ferrisfencing.com

Prices Subject to change Without Notice.

Ferris Fencing disclaims responsibility for use or misuse of any products described in this Price List and Brochures, and any losses incurred through the use of the products. All products should be used according to the manufacturers instructions.